






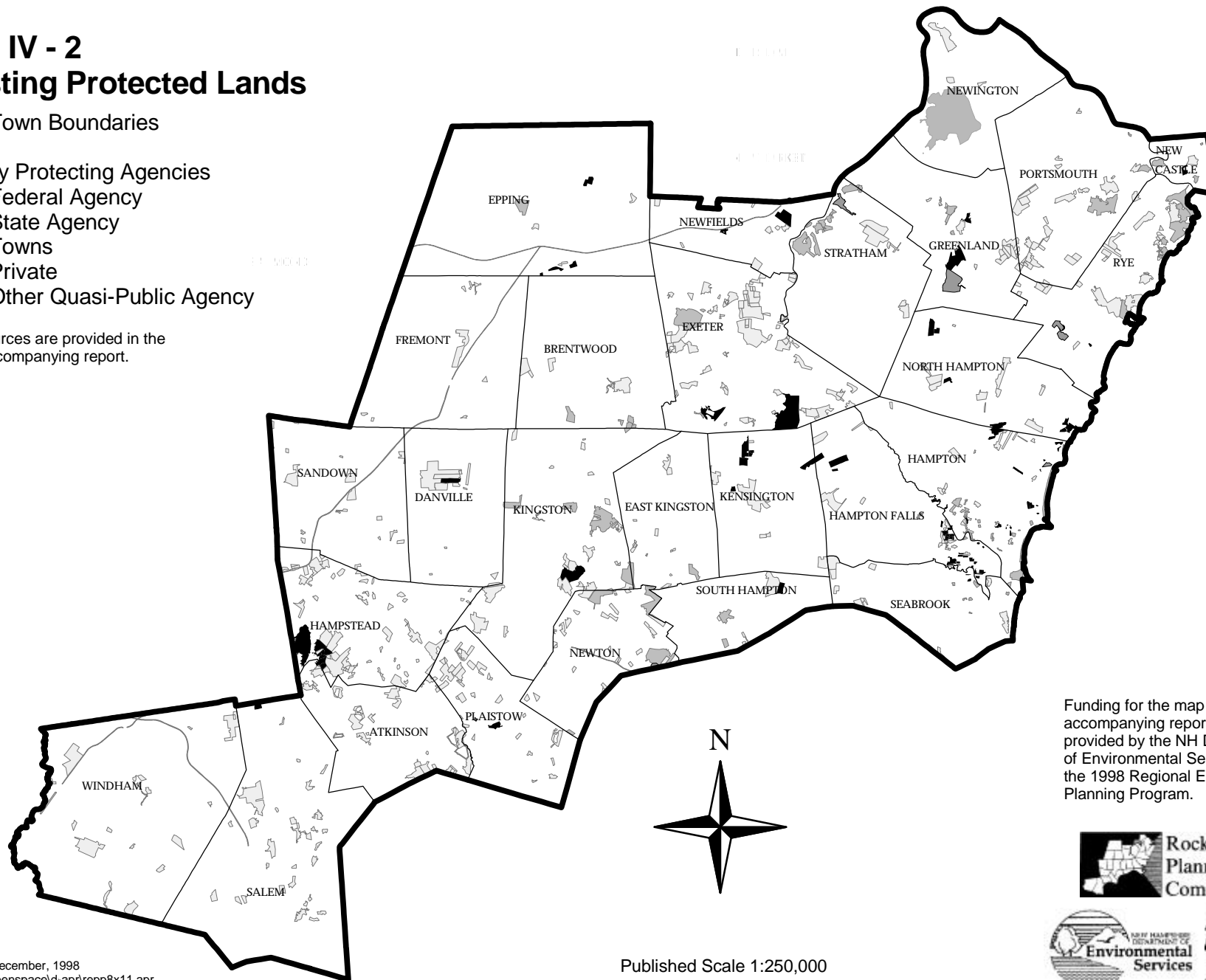
Map IV - 2 Existing Protected Lands

 Town Boundaries

Primary Protecting Agencies

-  Federal Agency
-  State Agency
-  Towns
-  Private
-  Other Quasi-Public Agency

Data sources are provided in the accompanying report.



Funding for the map and the accompanying report was provided by the NH Department of Environmental Services under the 1998 Regional Environmental Planning Program.

